

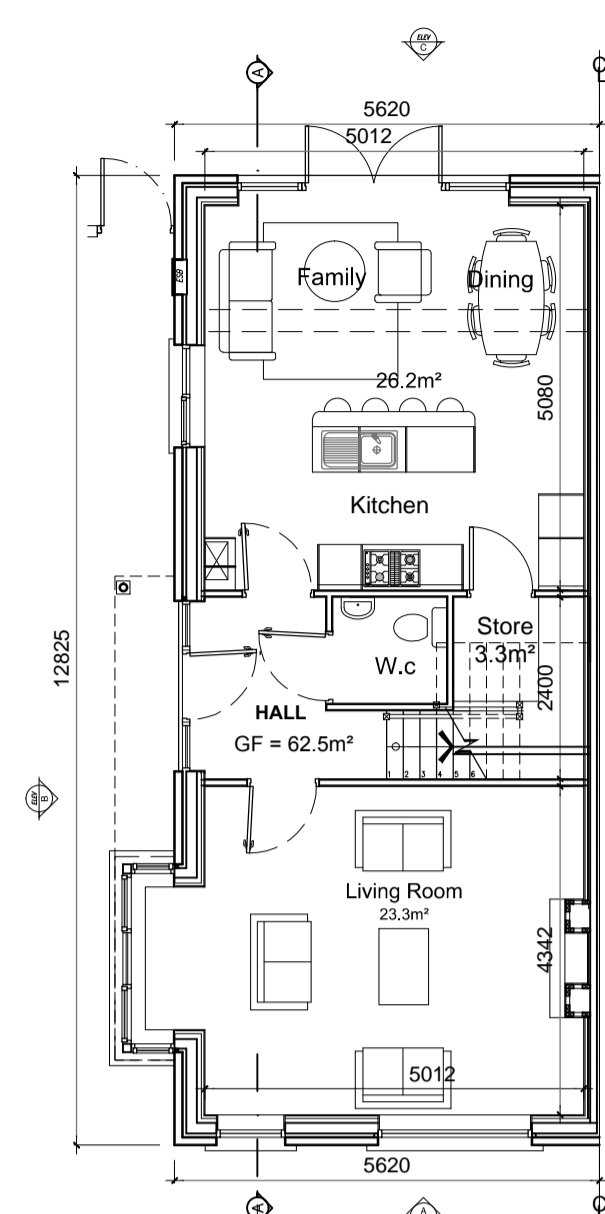
GENERAL NOTES

THIS DRAWING TO BE READ IN CONJUNCTION WITH ARCHITECT'S DRAWINGS, CONSULTANT ENGINEER'S DRAWINGS AND SPECIFICATIONS & LANDSCAPE ARCHITECT'S DRAWINGS
REFER TO ARCHITECT'S SITE PLAN PL002 and PL003 FOR NORTH ORIENTATION.
LEVELS GIVEN ON HOUSE TYPE DRAWINGS ARE GIVEN TO A LOCAL ABSOLUTE ZERO LEVEL. FOR SPECIFIC LEVELS DEPENDING ON INDIVIDUAL UNIT LOCATION, REFER TO ARCHITECT'S CONTEXT SECTIONS AND ENGINEER'S DRAWINGS WHERE LEVELS ARE ALL GIVEN IN RELATION TO LAND SURVEYOR'S BENCHMARK BASED ON MALIN HEAD DATUM LEVEL.

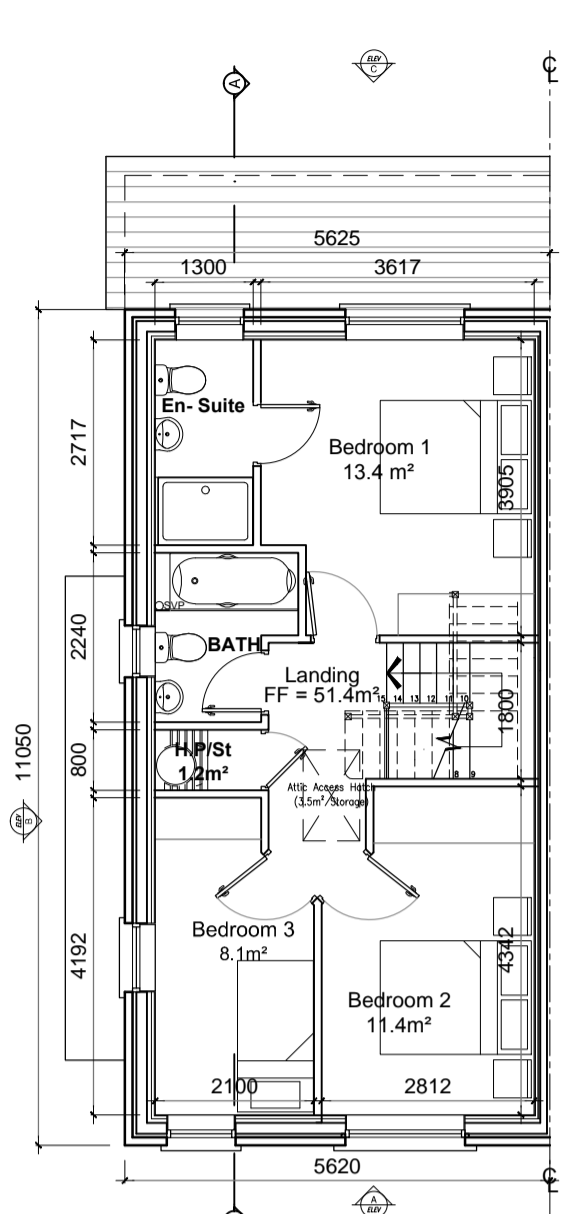
REFER TO SITE LAYOUT PLAN FOR NORTH ORIENTATION
REFER TO CONSULTING ENGINEERS DRAWINGS FOR BLOCK LEVELS

NOTES ON FINISHES:

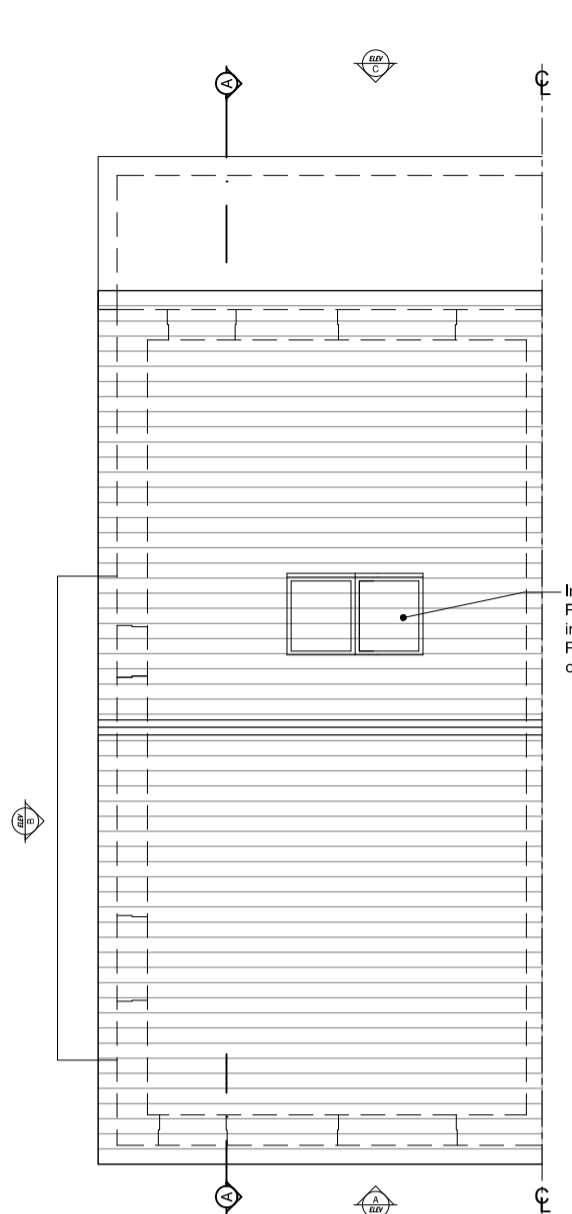
- ROOF:** TO BE FINISHED IN SLATE OR CONCRETE ROOF TILES IN SELECTED COLOUR OR SIMILAR APPROVED.
- WALLS:** SELECTED CLAY BRICKWORK WHERE INDICATED OTHERWISE PAINTED SAND / CEMENT RENDER OR SELF COLOURED RENDER OR DRY-DASH TO CONCEALED SIDE GABLES.
- JOINERY:** ALL WINDOWS AND DOORS, FRAMES AND LEAVES, TO BE ALUMINIUM POWDER-COATED TO APPROVED COLOUR OR UPVC OR PAINTED TIMBER TO APPROVED COLOUR. OBSCURE GLAZING WHERE INDICATED TO SENSITIVE WINDOWS.
- RAINWATER GOODS:** GUTTERS, DOWNPIPES, AND FIXINGS TO BE UPVC OR ALUMINIUM POWDER COATED TO SELECTED COLOUR TO MATCH ROOF SLATES
- * SOLAR PANELS:** INDICATIVE SOLAR PANEL POSITION, FINAL SOLAR PANEL POSITION DEPENDS ON HOUSE ORIENTATION. THE SOLAR PANELS SHOWN ARE A PROVISIONAL OPTION TO SATISFY RENEWABLE ENERGY REQUIREMENTS OF BUILDING REGS PART L. SOLAR PANELS MAY BE OMITTED IN FAVOUR OF ALTERNATIVE RENEWABLE ENERGY SOURCE.



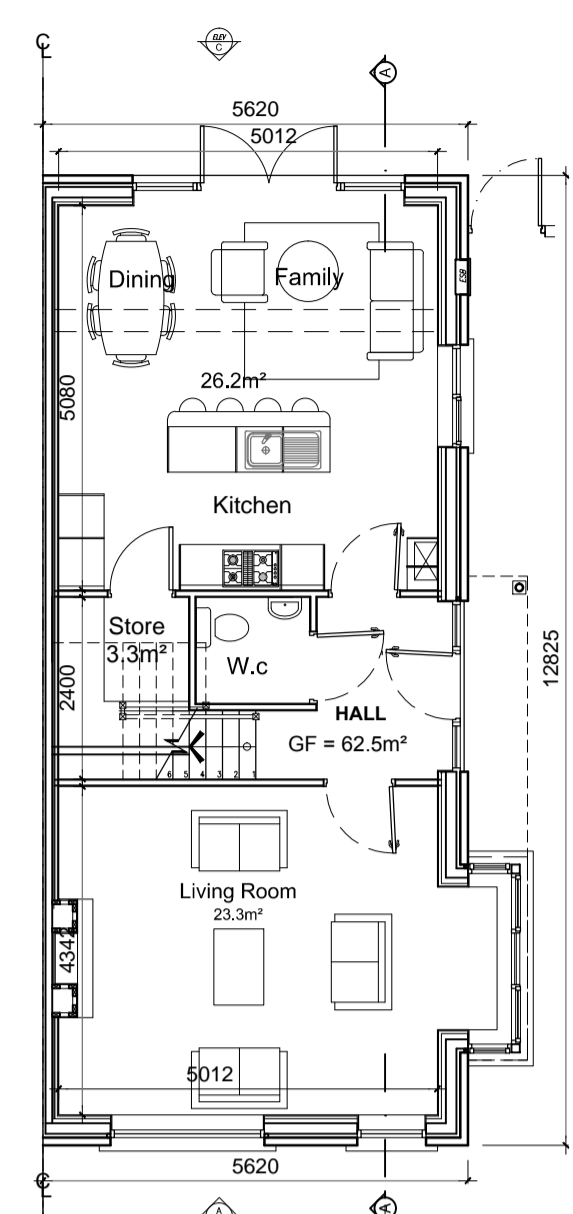
Ground Floor Plan Left Entry
area 62.5m² / 673 ft²
O'ALL AREA 114m² / 1,227 ft²



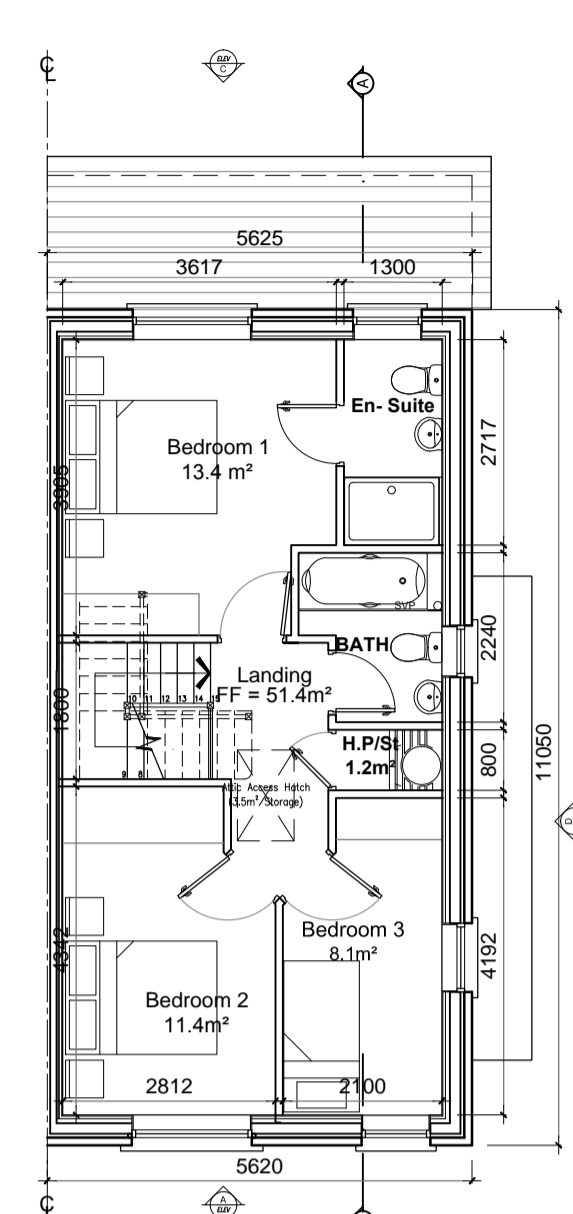
First Floor Plan Left Entry
area 51.4m² / 553 ft²



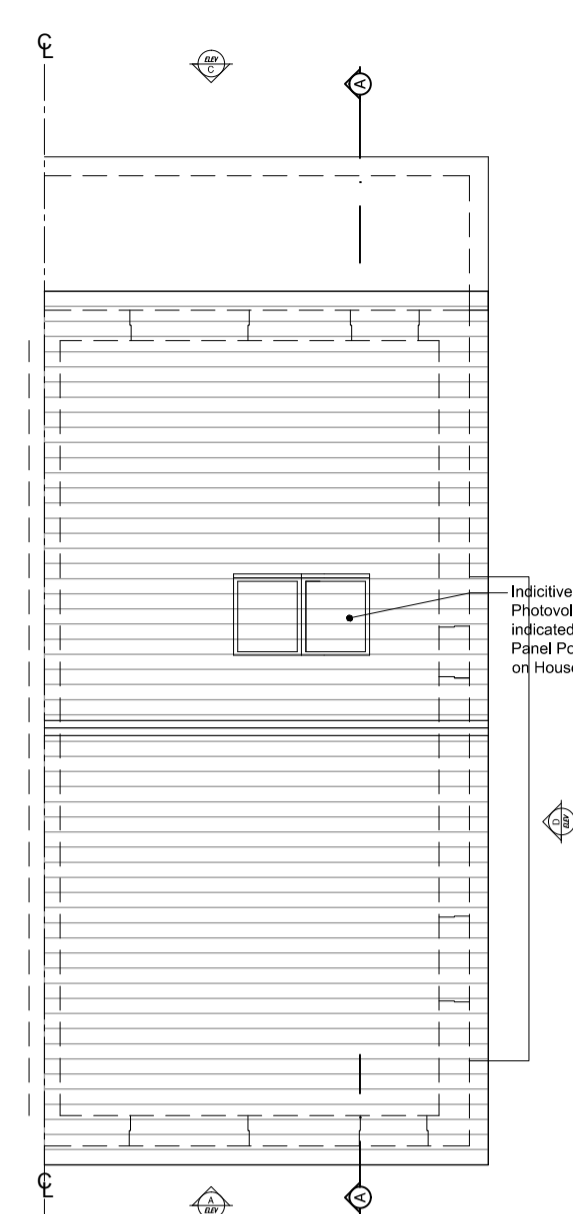
Roof Plan



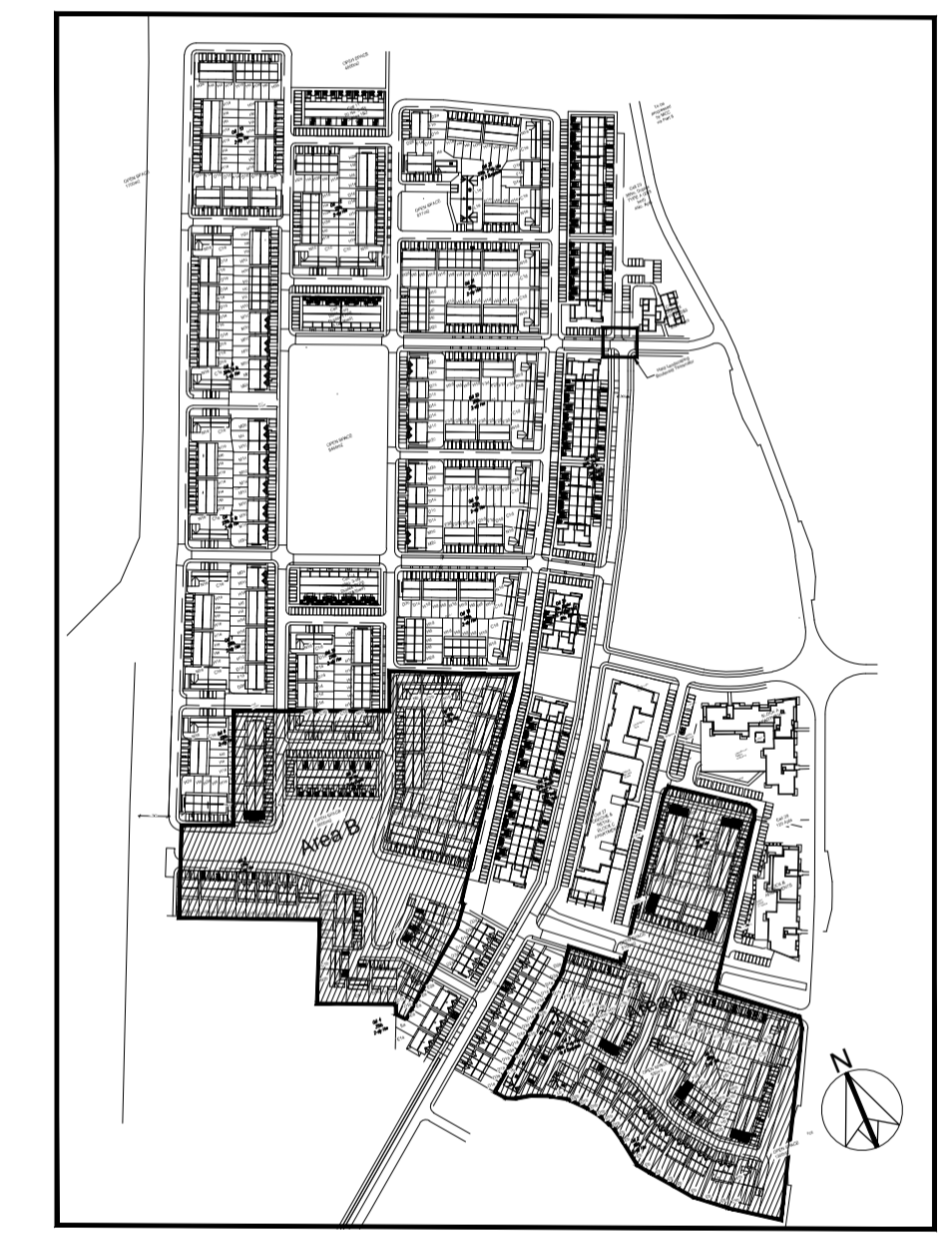
Ground Floor Plan Right Entry
area 62.5m² / 673 ft²
O'ALL AREA 114m² / 1,227 ft²



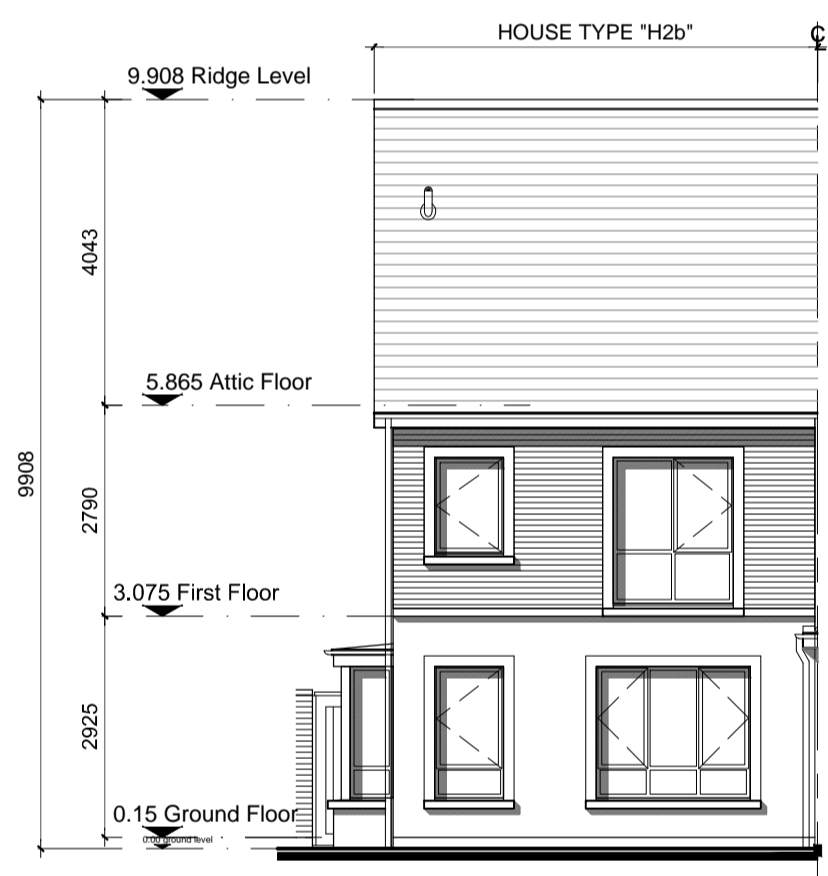
First Floor Plan Right Entry
area 51.4m² / 553 ft²



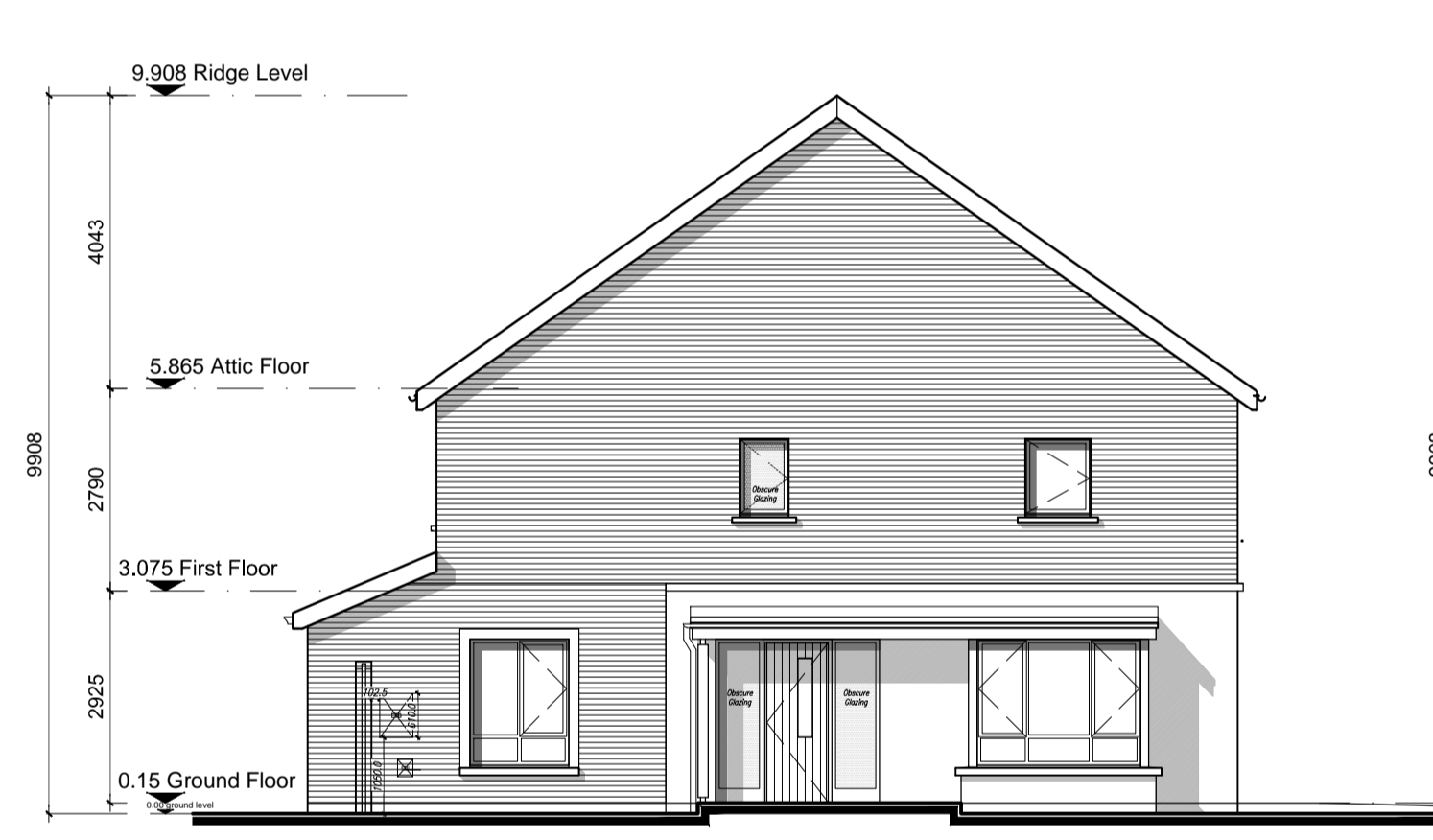
Roof Plan



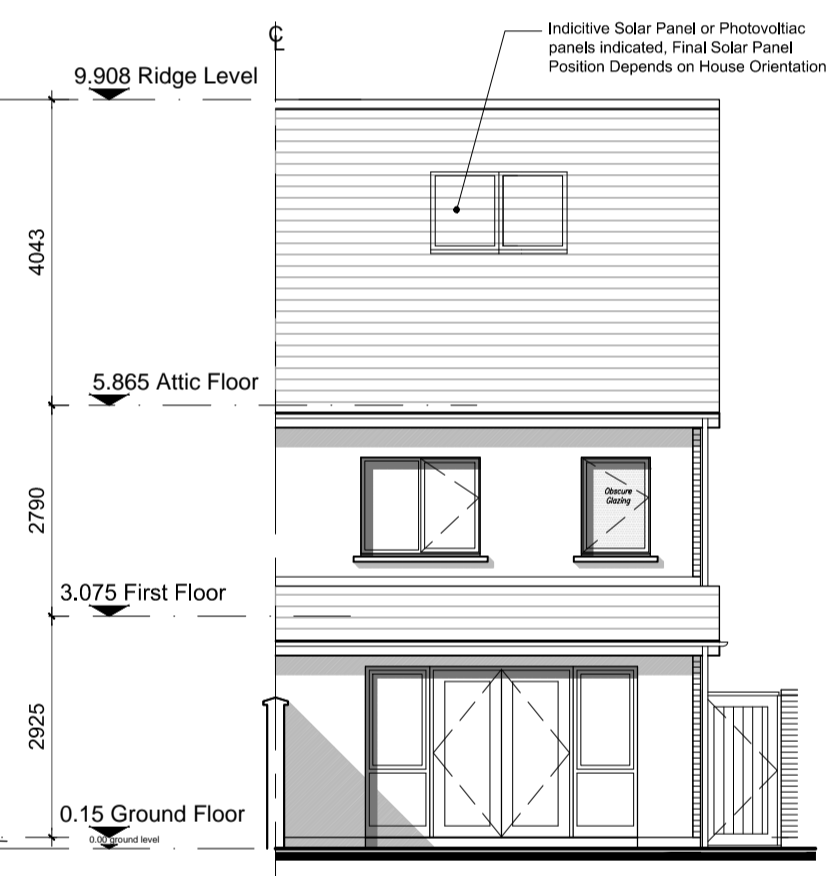
KEY PLAN - NTS



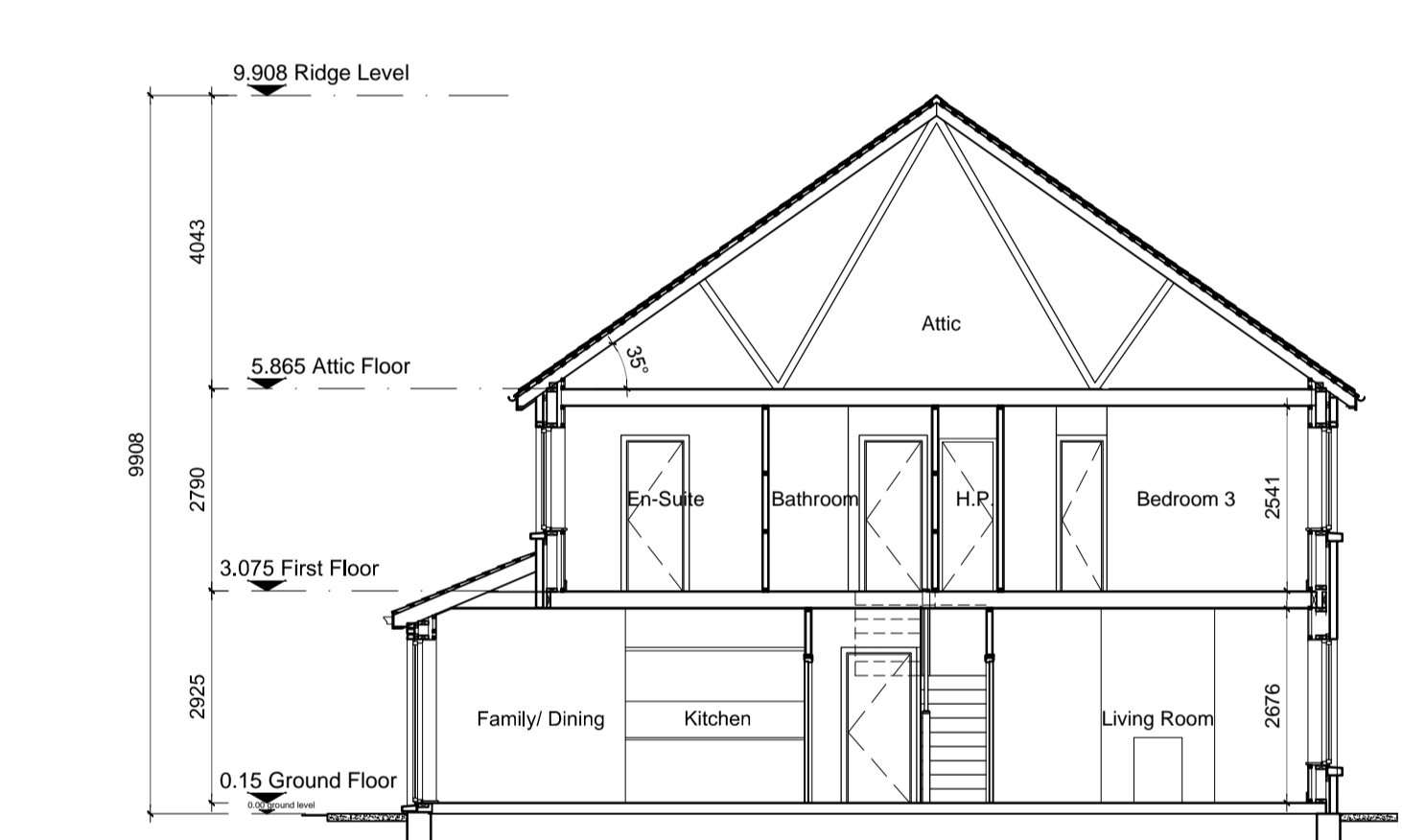
Front Elevation 'A' Left Entry



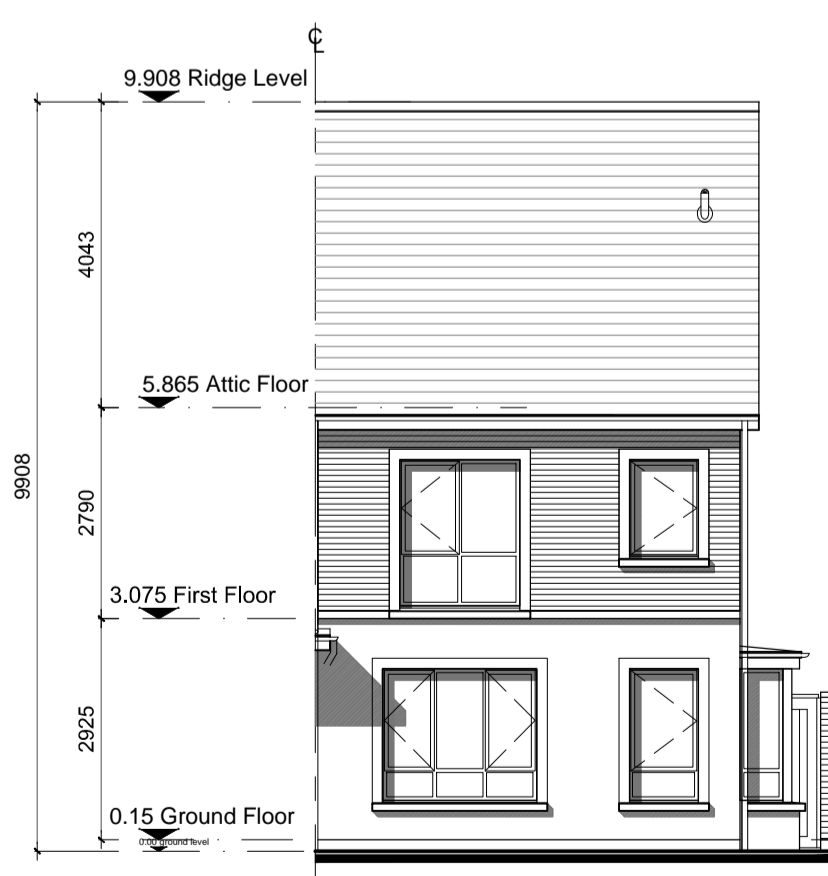
Side Elevation 'B' Left Entry



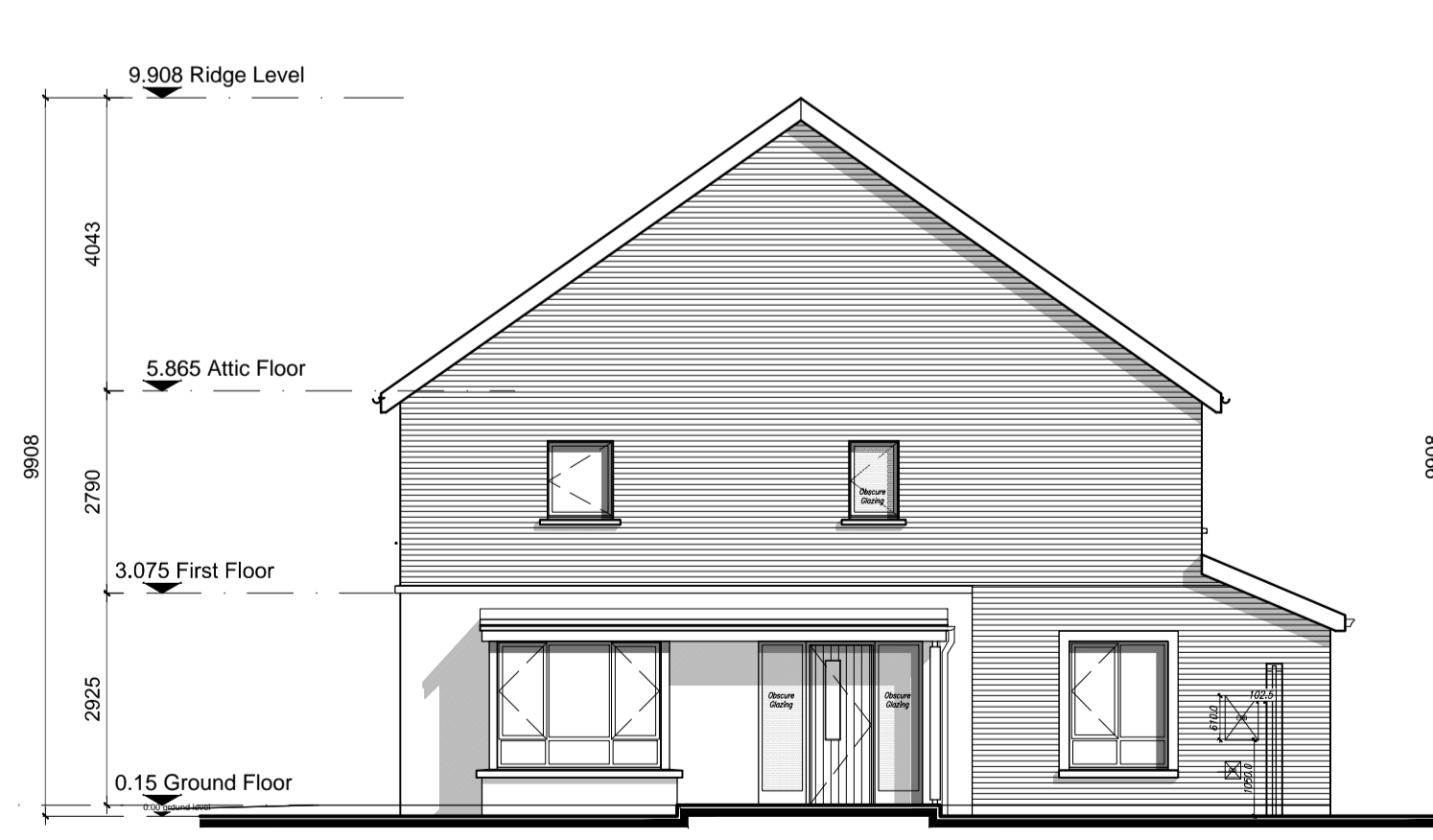
Rear Elevation 'C' Left Entry



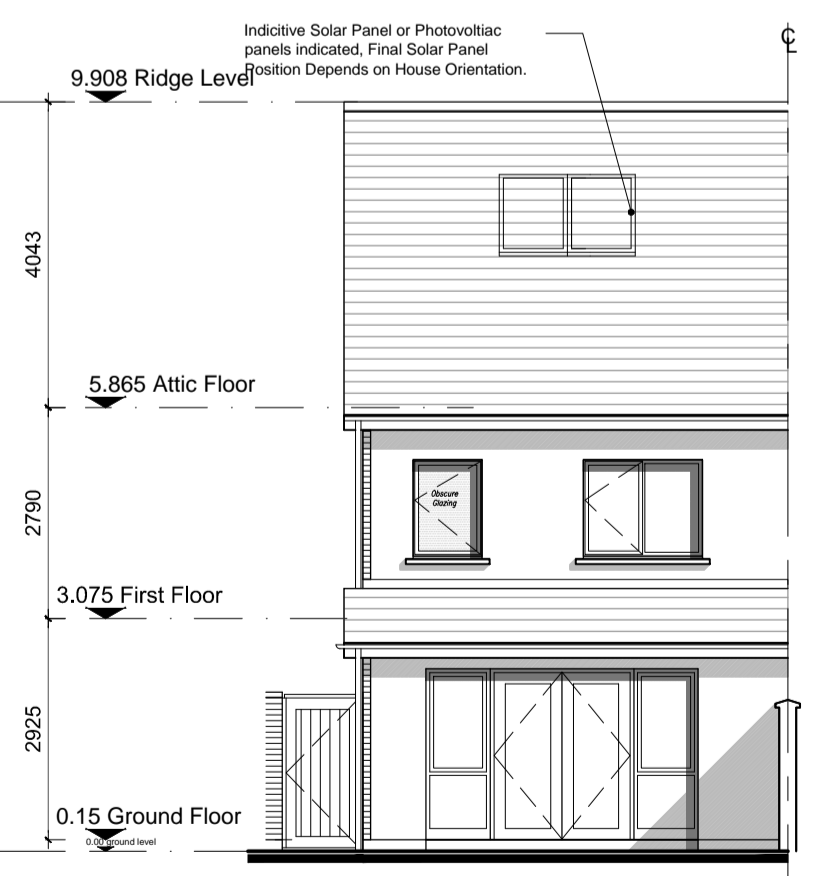
SECTION A-A Left Entry



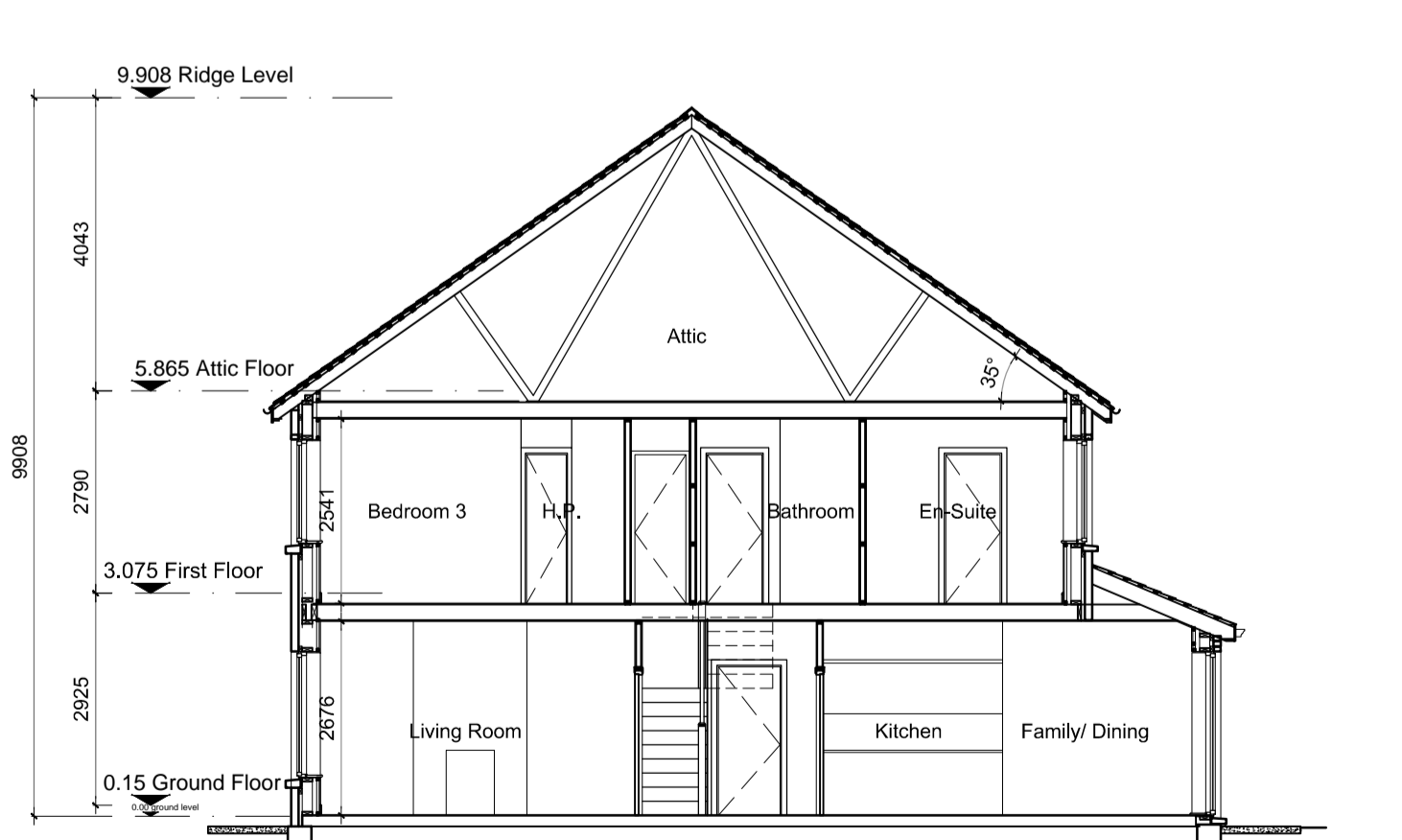
Front Elevation 'A' Right Entry



Side Elevation 'D' Right Entry



Rear Elevation 'C' Right Entry



SECTION A-A

Character Area B Left & Right Entry

H2b	HOUSE TYPE H2a	End-Terrace
	2 STOREY	114 m ² / 1,227 ft ²
	3 BED	No of Units: 8

NOTES:

DO NOT SCALE FROM DRAWINGS. WORK TO FIGURED DIMENSIONS ONLY. ARCHITECT TO BE NOTIFIED OF ALL DISCREPANCIES.

REVISIONS		
DATE	DESCRIPTION	No.



PROJECT TITLE: Dunshaughlin East SHD	DATE: Dec'18	DRAWN BY: DB
DRAWING TITLE: House Type H2b Semi D - End Terrace Plans, Elevations, & Section	SCALE: 1:100@A1	REVISION:
JOB NO: 16028.1SHD116	DRAWING NO:	